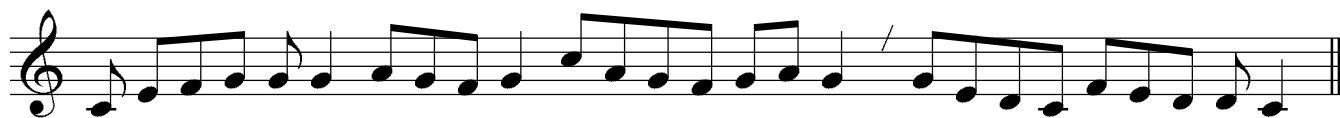


# VIII. GREGORIJANSKA MISA - DE ANGELIS

## GOSPODINE



Go spo - di-ne \_\_\_\_\_ smi - luj se.



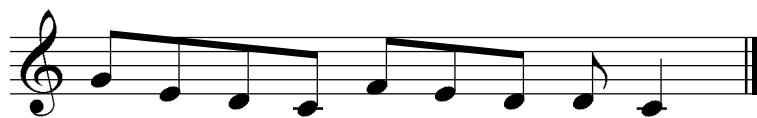
Kri-ste \_\_\_\_\_ smi - - luj se.



Gospo-di- ne \_\_\_\_\_ smi - - luj se.



Gospo-di- ne \_\_\_\_\_



smi - - - luj se.

## SLAVA



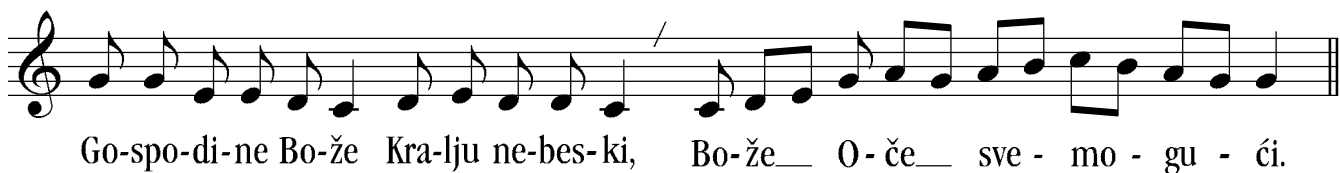
Sla-va Bo-gu na vi-si - ni. I nazem-lji mir\_ lju-di-ma do - bre\_ vo - lje.



Hva-li- mo\_ te.\_\_\_\_ Bla- go - sliv-lja-mo te.\_\_\_\_ Kla-nja- mo\_\_\_\_ ti\_\_\_\_ se.



Sla-vi- mo\_ te.\_\_\_\_ Za-hva-lju-je - mo\_ ti,\_\_\_\_ ra-di ve-li-ke sla-ve tvo - je.



Go-spo-di-ne Bo-že Kra-lju ne-bes-ki, Bo-že O-če sve - mo - gu - ci.



Go-spo - di - ne Si - ne je - di - no - ro - de - ni I - su - se Kri - ste.



Go-spo-di-ne Bo-že Ja-ganj-če Bo - žji Si - ne O - čev.



Ko - ji o - du - zi - maš grije - he svije - ta smi - luj nam se.



Ko - ji o - du - zi - maš grije - he svije - ta pri - mi na - šu mo - li - tvu.



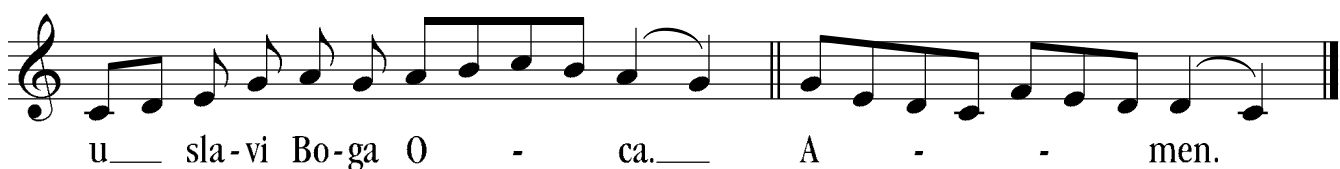
Ko - ji sje - diš s de - sne O - cu, smi - luj nam se. Jer - ti si je - di - ni svet.



Ti si je - di - ni Go - spo - din. Ti si je - di - ni sve - viš - ni.

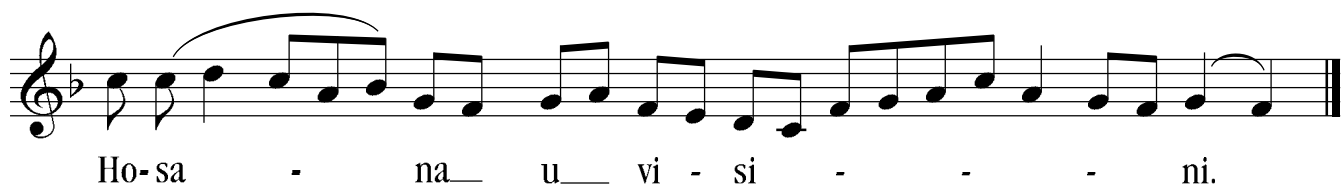
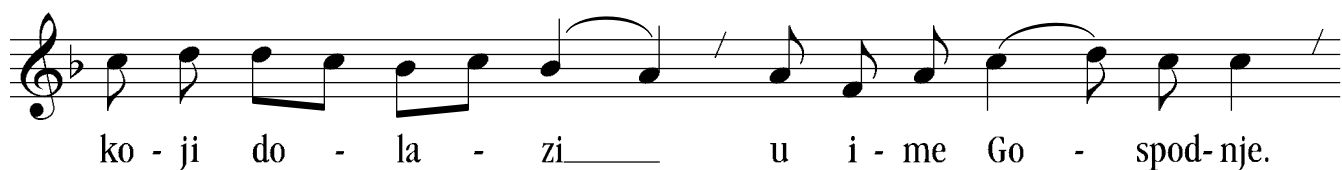
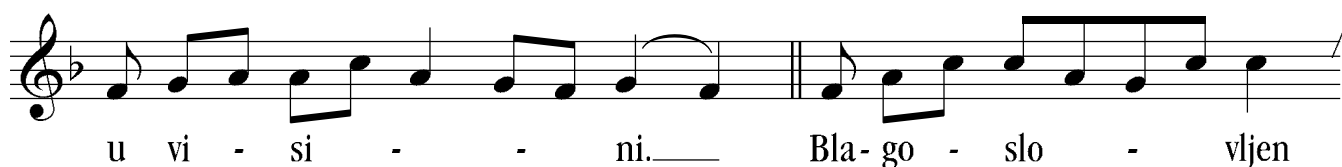
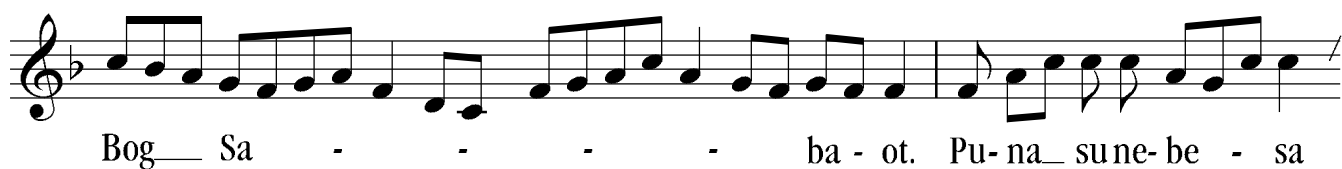
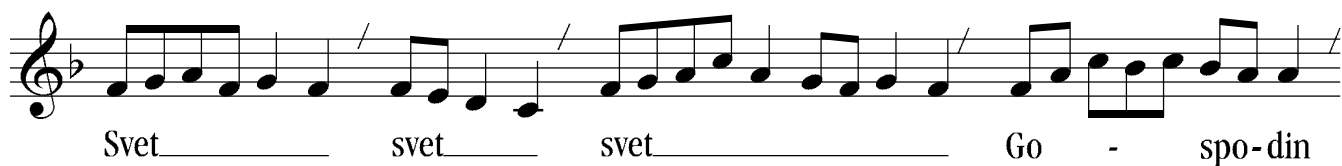


I - su - se Kri - ste. Sa Sve - tim Du - hom

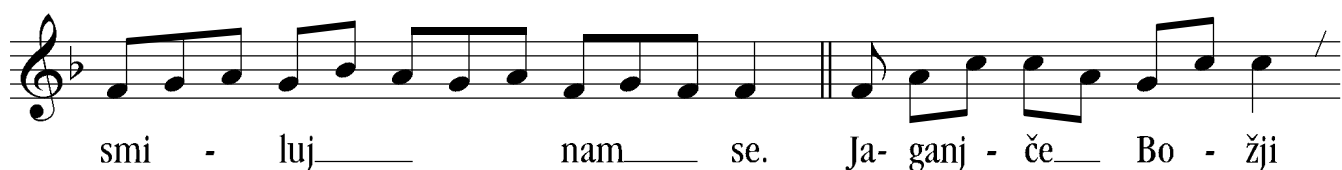


u sla - vi Bo - ga O - ca. A - - men.

# SVET



# JAGANJČE BOŽJI





ko - ji o - du - zi - maš grije - he\_\_ svije - ta, smi - luj\_\_\_\_\_ nam\_\_ se.



Ja - ganj - će\_\_ Bo - žji ko - ji o - du - zi - maš grije - he\_\_ svije - ta,



da - ruj\_\_\_\_\_ nam\_\_ mir.